

Swallowfield Primary

Weathercock Close, Woburn Sands, Milton Keynes, MK17 8SR, Tel: 01908 582101

Monday 5th January 2026

Dear Parents/Carers,

Welcome back! We hope you had a lovely Christmas break and would like to wish you a Happy New Year. We are excited about the term ahead and have lots to look forward to.

Curriculum

Please see Google Classroom for our medium term plan which outlines what we will be covering week by week.

PE

The children need to come to school dressed in their PE kit on their year group's PE day. Our PE day is a **Friday**. Please therefore send your child to school in their full PE kit every Friday. They do not need to bring any other clothes with them, except for a coat if it is cold or wet. A full PE kit should consist of a royal blue polo shirt and navy-blue shorts, along with navy joggers or leggings and a navy sweatshirt or fleece. Shorts are safer and more practical for some lessons (e.g. gymnastics) so we would suggest that in colder weather the children wear their shorts underneath their jogging bottoms or leggings. Socks and trainers also need to be worn. Due to the expansion of the school and limited use of the school hall, we will be making use of outdoor areas for some of our PE lessons so it is essential that your child is wearing appropriate (and warm in the winter) clothing for PE. **No jewellery should be worn on PE days, including earrings.** Long hair should also be tied back please.

Forest School

We are lucky enough to be taking part in Forest School again this half term. We will be doing Forest School on a Wednesday morning so please ensure your child brings their Forest School clothes with them in a named carrier bag or they will not be able to join in. Please see the school website for more information on what to wear <https://swallowfieldprimary.com/forest-school/>.

Equipment

Please ensure your child brings a named water bottle to school every day and a morning fruit snack. We ask that the children only have water in their bottles please. They are provided with a piece of fruit in the afternoon. As you are already aware, there are several children at Swallowfield with **severe nut allergies**. With this in mind, please ensure that no food containing nuts is brought into school.

Uniform

Please ensure that children are wearing the correct school uniform. Additionally, please ensure that hair accessories and jewellery are in accordance with our uniform policy. Please refer to the school website for clarification. <https://swallowfieldprimary.com/uniform-2/>

Homework

A selection of homework tasks will be uploaded termly to Google Classroom. If you choose to complete some of these, please upload photos or videos to your child's Google Classroom account for us to see.

Home School Library will resume on Tuesday 6th January. Please ensure your child's book bag is in school on this day. Reading can have such a huge impact on your child's academic progress. We really encourage daily reading at home when possible. Bookbags will need to come into school every **Tuesday** to be changed.

This term we will send home weekly spellings for the children to practise. They will be tested on these at school on the following Friday. The first set of spellings will be sent home on Friday 16th January.

History

This half term we will be looking at how toys have changed in our History unit. Please can all children bring in a named toy or a picture of their toy for **Thursday 8th January**.

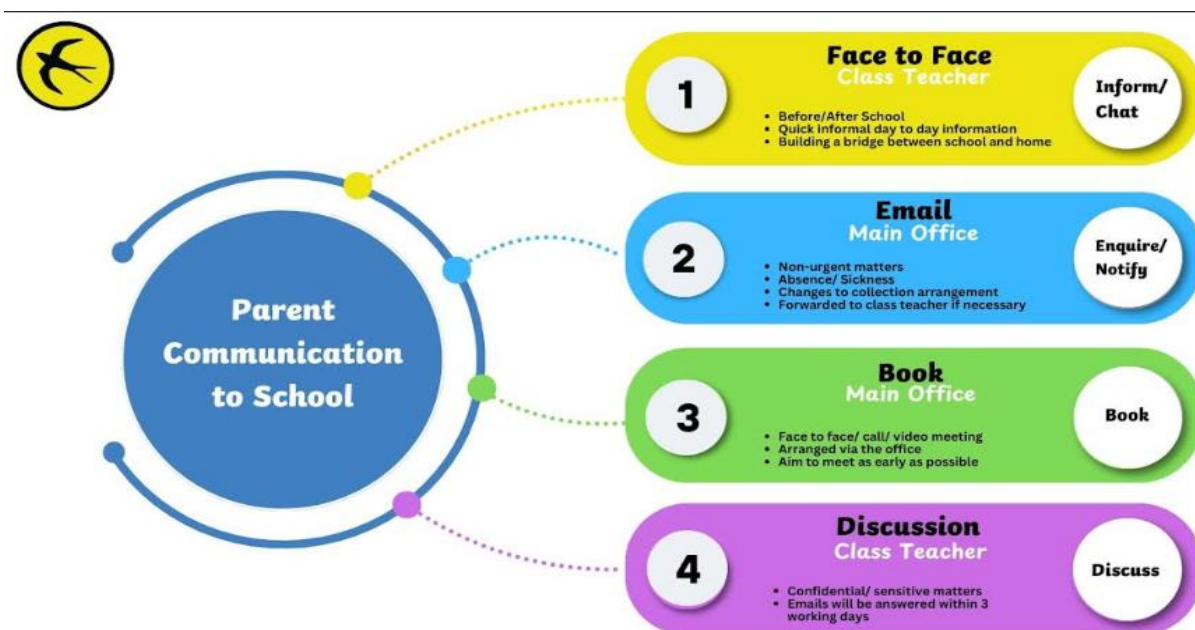
Going Home Arrangements

If your child is going home with someone else please let us know **prior to pick up**. Without parental consent, we are unable to release your child to anyone else. If your child will be going home with someone other than yourself on a regular basis (grandparents, childminders, after school club etc.), it would also be useful to have this in writing via email. For on the day arrangements, please contact the office when notifying us about pick up because teacher's emails may not be checked until after school.

Communication

At Swallowfield, we're placing more emphasis on face-to-face communication to help strengthen the relationships between school and families. While you can still email or call as needed, we encourage you to use the numbered system shown here to help direct your message in the most effective way.

This helps us respond as efficiently and clearly as possible, especially as class teachers aren't always able to reply during the school day.



If you feel that you need to come and talk to us about anything concerning your child, please do. Communication between home and school is important and please feel that you can approach us. With that in mind, the best way to contact us is to either catch us on the door at the end of the day or to email us directly on the following email addresses. Please note that we will endeavour to respond to emails within 3 working days. If the matter is more urgent, please contact the school office on enquiries@swallowfieldprimary.com or 01908 582101.

Birch Class - d.ford@swallowfieldprimary.com

Pine Class - g.ballinger@swallowfieldprimary.com

We look forward to working with you and your child this term.

Kind regards,

Mrs Ballinger-Carter Mrs Ford
Year One Teachers

Head Teacher: Mrs K Brewer NPQH Email:
enquiries@swallowfieldprimary.com
www.swallowfieldlowerschool.co.uk

