

# Swallowfield Primary

Weathercock Close, Woburn Sands, Milton Keynes, MK17 8SR, Tel: 01908 582101

Wednesday 4th September  
2025

Dear Parents/Carers,

Welcome to Year 3! We are so pleased to be welcoming you back and having all the children at school. We hope that you had a restful summer break and that the children are looking forward to the new school year. Our theme this half term will be 'The Stone Age'. An overview of all of our learning will be available on the school website at the start of term along with some helpful knowledge organisers. We hope the children will really enjoy this theme and find it to be an interesting and exciting learning experience.

## Homework

Homework will recommence the week beginning 8<sup>th</sup> September. The Autumn terms break down of homework will be stuck inside your child's learning log, we ask that you sign off the children's daily reads as well as any completed homework tasks. The children will continue to receive weekly spellings on a Monday and will be tested on Friday. We will also be practising our times tables every week and may send home some ideas and ways to practise these too. It is very important that the children practise both of these at home on a daily basis to support their learning in class.

We will recommence the Home/School library in the second week of term, and look forward to offering the children the opportunity to take a reading book home on a regular basis. The children will be required to borrow and return their books each week on a Thursday. We encourage all of the children to read with an adult on a daily basis. If they haven't done so already, please ensure that your child has returned their book bag from the previous year.

Any completed homework should be submitted via your child's learning log. Photographs or short video clips can however be sent to your child's class teacher via google classrooms. It will not be necessary to submit spelling practice. We understand that it is sometimes difficult to find time for the children to complete their Learning Tasks, but we do encourage them to complete at least one piece a week. This enriches and supports their work at school.

## Equipment

Please ensure your child brings a named water bottle to school every day and an optional morning fruit snack. We ask that the children only have water in their bottles please. The children can also bring in one book from home that they can read during ERIC time. There is no requirement for stationery and please try and avoid large bags.



Head Teacher: Mrs K Brewer NPQH  
Email: [office1@swallowfieldprimary.com](mailto:office1@swallowfieldprimary.com)  
[www.swallowfieldlowschool.co.uk](http://www.swallowfieldlowschool.co.uk)



## P.E

P.E. day is Tuesday for both classes. This term we will be Swimming and learning a new game called 'Quicksticks' (an age appropriate version of hockey). As you can imagine, we will try to be outside for these as much as possible. We ask that the children come into school wearing their weather appropriate PE kits on the day that they are doing PE. Children will also need to bring in their swimming kit on their designated swimming day. Please see below for each class. Please note earring **are not allowed** in the pool and must be removed on swimming days at home (as per policy) the same applies for PE days.

Mrs Knox (Y3k)- Tuesday  
Miss Glyn Davies(Y3GD)- Friday

Please be aware that we will not be able to provide spare kit. PE and swimming are a statutory part of the KS2 curriculum and therefore children are required to take part if they are in school.

## Pick up/Drop off

Pick up and drop off will be at the Year 3 classroom doors situated in the main playground at 3:30pm.

## Uniform

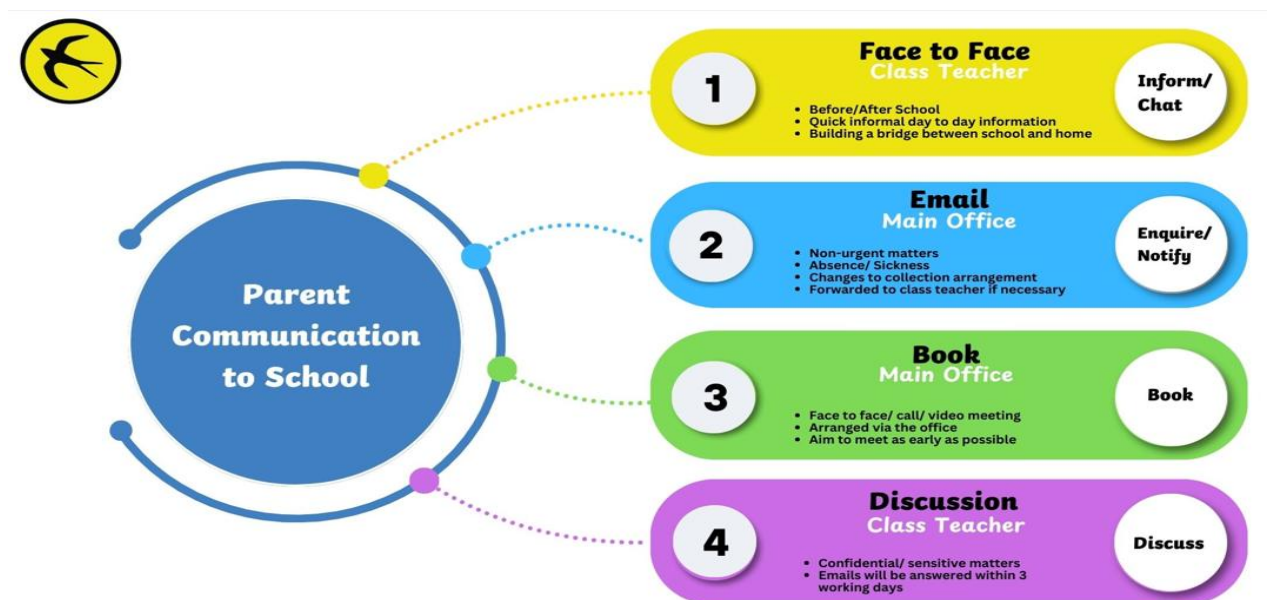
Please click on the below link to familiarise yourself with uniform expectations.

<https://swallowfieldprimary.com/uniform-2/>

## Welcome Meeting

The Year 3 Welcome meeting is schedule to happen on **Wednesday 10<sup>th</sup> September at 9am** in the school hall. We look forward to seeing you there.

## Contact



At Swallowfield, we're placing more emphasis on face-to-face communication to help strengthen the relationships between school and families. While you can still email or call as needed, we encourage you to use the numbered system shown here to help direct your message in the most effective way.

This helps us respond as efficiently and clearly as possible, especially as class teachers aren't always able to reply during the school day.

[k.knox@swallowfieldprimary.com](mailto:k.knox@swallowfieldprimary.com)  
[s.glyn-davies@swallowfieldprimary.com](mailto:s.glyn-davies@swallowfieldprimary.com)

We are looking forward to a very exciting and successful year.

Mrs Knox and Miss Glyn-Davies